

# 21-1108 Riverside Close

Port Coquitlam BC

REALTOR® Team  
**Keenan Neilly**

PERSONAL REAL ESTATE CORPORATION

Coldwell Banker Westburn Realty

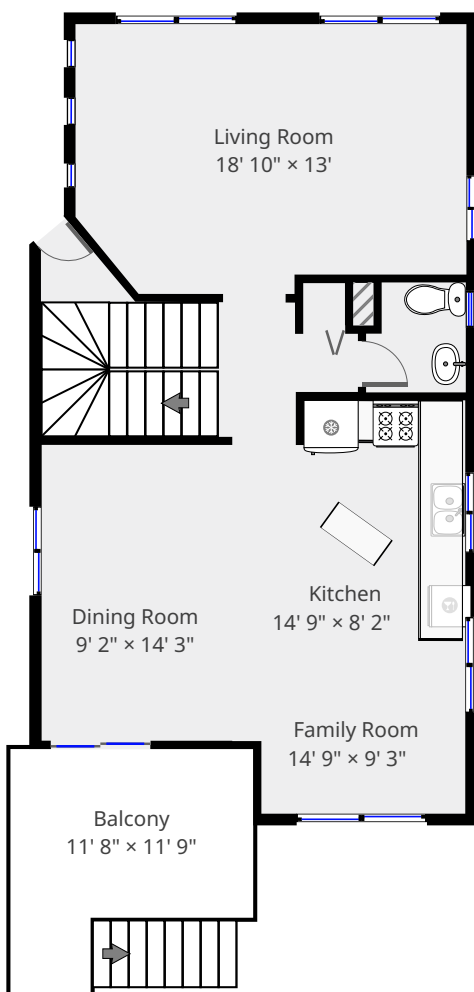
604 649 4548

info@keenanhomes.ca

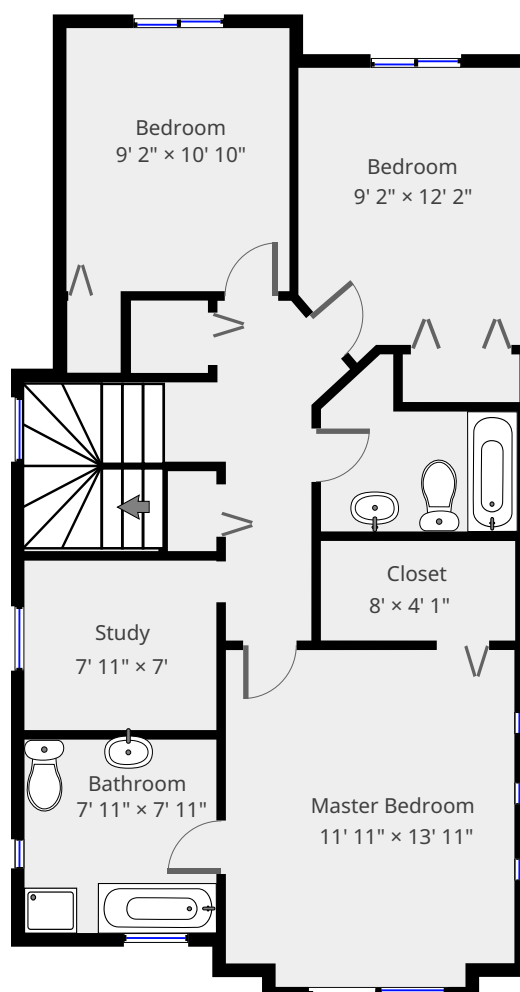
www.keenanhomes.ca

Main Floor	790 sqft
Upper Floor	792 sqft
Basement	529 sqft
<hr/>	
Total Living Space	2111 sqft

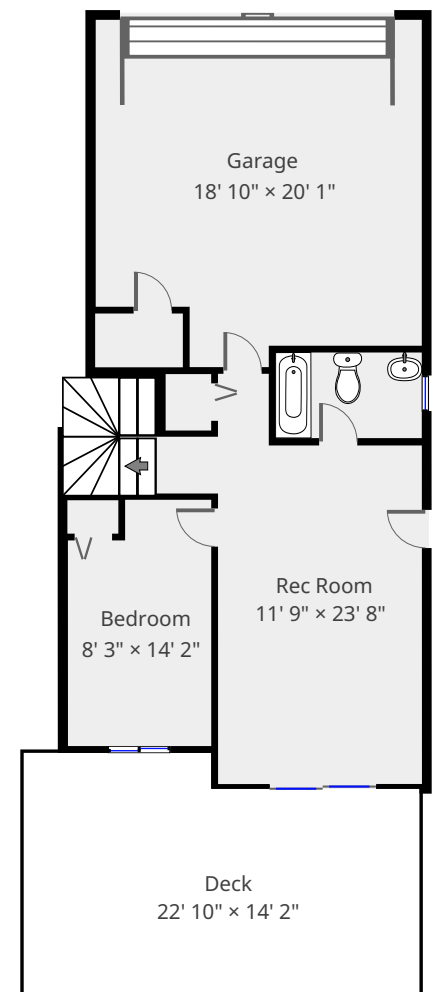
## Main Floor



## Upper Floor



## Basement



This floorplan is provided without warranty. The Contractor disclaims any warranty including, without limitation, satisfactory quality or accuracy of dimension. Floorplan is for visual marketing purposes and is not guaranteed.

Booked on [roomvu.com](https://roomvu.com)

**roomvu**